



Santa Amalia ? [+1917]

Details

general

nationality: [british](#)
 purpose: [transport](#)
 type: [tanker](#)
 propulsion: [steamer](#)
 date built: 1906
 status: [live](#) [++](#)

details

weight (tons): 4306 grt
 dimensions: 117,3 x 15,2 x 5,5 m
 engine: [triple expansion](#) engine
 power: 400 n.h.p.
 speed: 10 knots

about the loss

cause lost: [torpedo](#)
 date lost: [28/12/1917](#) [dd/mm/yyyy]
 casualties:

about people

builder:  [Russell & Co. Ltd., Greenock](#)
 owner:  [Eagle Oil & Shipping Co. Ltd., London](#)
 captain:

about the wreck

depth: 110 max. / 100 min. (m)
 orientation: 135°
 orientation: 200
 protected:
 war grave:


updates

entered by: [Lettens Jan](#)
 entered: 27/08/2008
 last update: [Lettens Jan](#)
 last update:

Position

[Lettens Jan](#) 01/10/2009

latitude: [Only for Hydrographic service subscribers.](#)
 longitude: [Only for Hydrographic service subscribers.](#)
 system: [WGS84](#)
 division: [1'=1000](#)
 accuracy: [gps 0~10m](#)
 remarks: [Method: Differential Global Positioning System Quality: Surveyed Accuracy: 3 m](#)
 ref. used: [UK Hydrographic Office](#)

 [add position to my marks](#)

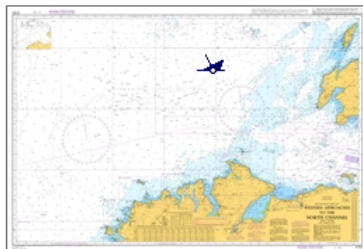
show neighbour. wrecks: [members only](#)

[check AIS](#)

[insert new position](#)

The Wreck today

Pictures



[Lettens Jan](#) 22/10/2009

[Western approaches to the North Channel](#)

This is a thumbnail version of the chart **Western approaches to the North Channel**. You do not have sufficient rights to see this chart in full resolution [11575x7560 pixels]. Click [this link](#) to subscribe to this



[insert new picture](#)

Hydrographic Service UK

WRECK REPORT

HYDROGRAPHIC SERVICE
FOR THE UK

DATABASE

WRECK REPORT

LIVE

The wrecksite has been derived in part from material obtained from the [UK Hydrographic Office](#) with the permission of the UK Hydrographic Office and Her Majesty's Stationery Office and the following authorities.
 © British Crown Copyright, 2008.

History

[Allen Tony](#) 26/04/2008

Santa Amalia was a 4,306grt defensively-armed British Merchant Steamer built in 1906 by Russell & Co, Port Glasgow, Yard No 559 for Joseph Chadwick & Son, Liverpool as the DRUMLANRIG SS. Engines by D. Rowan & Co. were a steam triple expansion engine. In 1915 she was purchased by Eagle Oil Co and renamed SANTA AMALIA. On the 28th December 1917 when 30 miles N by E ½ E from Malin Head, Ireland she was torpedoed without warning and sunk by German submarine U-19.

43 lives lost including Master.

ref. used: [Stuart Cameron](#), [www.clydesite.co.uk](#)

The Wreck today

[Letzens Jan](#) 01/10/2009

Only for Hydrographic service subscribers.

ref. used: [UK Hydrographic Office](#)

[insert wrecksite info](#)

ref. used: [Stuart Cameron, www.clydesite.co.uk](#)

[Letzens Jan](#) 01/10/2009

Only for Hydrographic service subscribers.

ref. used: [UK Hydrographic Office](#)

[insert new history](#)

Documents

[insert new document](#)

About Owner(s)



[Eagle Oil & Shipping Co. Ltd., London](#)
Eagle Oil and Shipping Co. was merged into Shell International Petroleum Company in 1959.



LAT: 57°21,2XXN LON: 2°43,4XXW

